

Hunex

Modern Surfaces



KOREA
HYUNDAI L&C
HEADQUARTER

East Central Tower Building, 1077,
Cheonho-daero, Gangdong-gu, Seoul, Korea (05340)
Tel. +82 2 6364 7488
Email. info.stone@hyundailnc.com
www.hanex.com

INDIA
HYUNDAI L&C INDIA PVT LTD

Unit No. 101B, 1st Floor, Tower C, Unitech World Cyber Park,
Sector 39, Gurgaon 122001, Haryana, India (122002)
Tel. +91 0124 4317 305
Email. ask.india@hyundailnc.com

CHINA
HYUNDAI L&C TRADING (SHANGHAI) CO., LTD

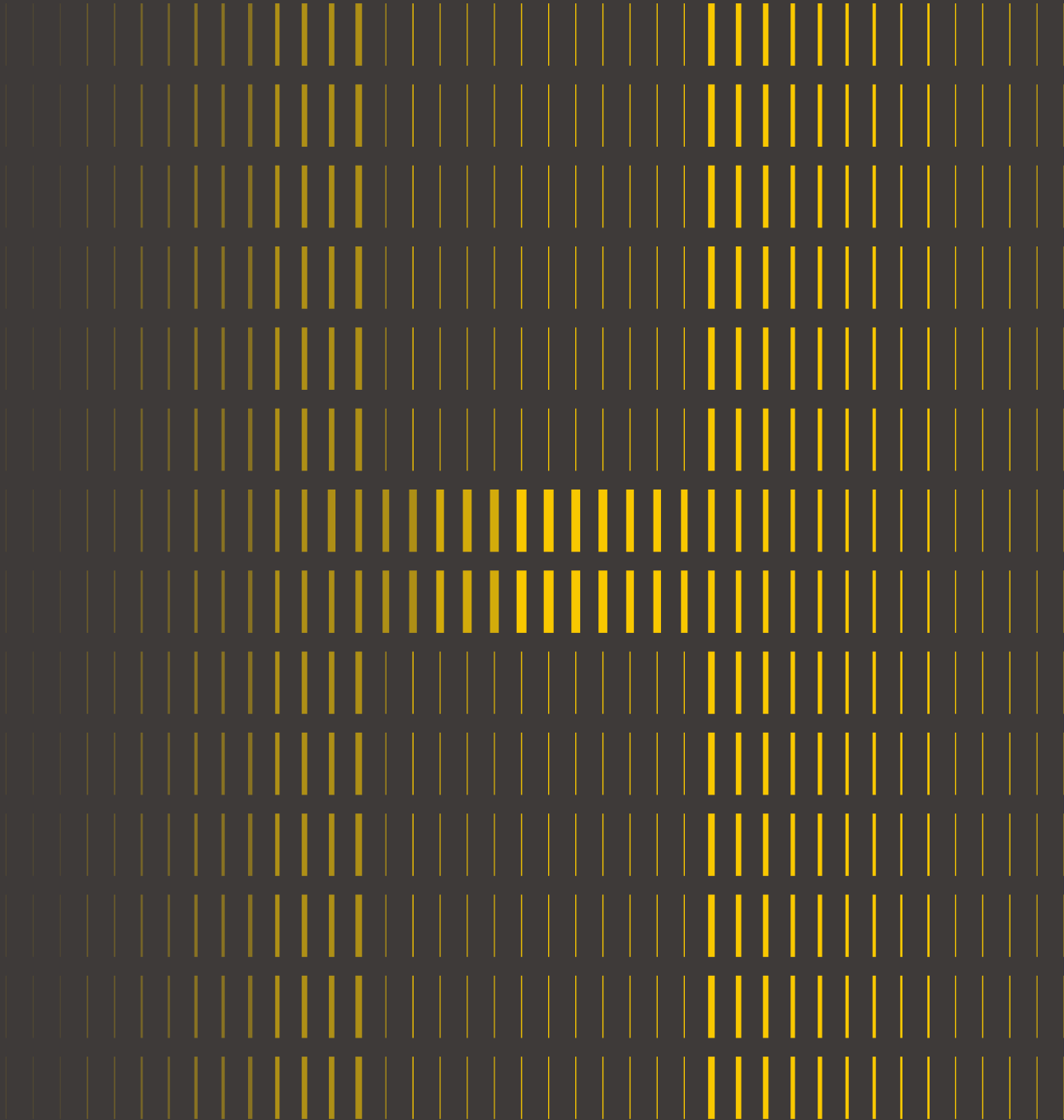
Room 603, Mixc Mall A, Wuzhong Rd 1799,
Minhang Dist, Shanghai, China (201103)
Tel. +86 21 3252 2291
Email. sz.wang@hyundaish.com
www.hyundailnc.cn

USA
HYUNDAI L&C USA LLC

1760 Corporate Dr, Norcross, GA, USA (30093)
Tel. +1 888 426 9421
Email. info@hanexsolidsurfaces.com
www.hanexsolidsurfaces.com

EUROPE
HYUNDAI L&C EUROPE GmbH

Düsseldorfer Str. 13, Eschborn, Germany (65760)
Tel. +49 619 6586 9010
Email. info@hyundailnc.eu
www.hyundailnc.eu



COMPANY

Pioneering the value of spaces, we are advancing as a Global Leader in Building Materials for Interiors.

Based on our unique high-value-added technological expertise that we have managed to amass over half a century, Hyundai L&C has successfully established collaborative relationships with partners on both the domestic and international stage, firmly positioning itself as a “Global Leader in Building Materials.”.

It runs the business of various building materials including high-class interior stones and various surface finishing materials based on eco friendly interior film manufacturing technology, trendy style wall papers and flooring materials, and up to windows & doors of grade 1 energy saving technology.

Through relentless efforts to develop new technologies and innovative products, we will provide valuable solutions with solid quality assurance that suit our client's needs.

2018.12 Incorporated

Hyundai Department Store Group

Since 1965
59 years of experience

specializing in

comprehensive building materials

Sales in 81 Countries
5 Overseas sales corporations

Business Portfolio



Interior Stone

- Hanstone Quartz
- Hanex Solid Surfaces



Window

- PVC Window
- Window System
- Aluminum Window
- Inner Gate
- Home Door
- System Furniture



High-Functional Films

- Interior Film
- DIY Tile, Pannel
- Decorative Film
- Exterior Film
- Waterproof Sheet
- Rigid Film



Flooring / Wallpaper

- Vinyl Sheet
- Wood Flooring
- LVT, VCT
- Wallpaper
- Wallcovering Board

Hyundai Department Store Group

We are enhancing our customer's lifestyles across the entire realm of clothing, food, housing, and culture, and are offering fresh and unique experiences.

Ever since its establishment in 1971, HYUNDAI Department Store Group has evolved to provide a comprehensive lifestyle and culture, by expanding its business areas to include distribution, fashion, food, total living, digital, IT, rentals, travel and selective welfare, construction, bio, health, and beauty products.

Going forward, the Hyundai Department Store Group will boost its competitive power in each business area, and will actively seek to enter into new business fields with high growth potential in the future.

Comprehensive lifestyle and culture company



53 Years
of History



27 Affiliates
in Diversified Industries



21st
Domestic Business rankings

Business areas of Group

Distribution

- Hyundai Department-Store
- Hyundai Department-Store Duty Free
- Hyundai Home Shopping

Total Living

- Hyundai L&C
- Hyundai Livart
- ZINUS

Digital·IT

Hyundai IT&E

Travel · Welfare

- Hyundai Dream Tour
- Hyundai Ezwel

Fashion·Beauty

Handsome

Food

Hyundai Green Food

Bio·Health

Hyundai Bioland

Construction

Hyundai Everdigm

The HYUNDAI Family

On Resolve and the Spirit of Adventure.

Initial Founder
of HYUNDAI Group
**Chung
Ju-yung**
1915~2001



Automobile, Steel Construction,
Finance Automobile parts



Shipbuilding & Offshore, Naval & Special
Ship, Engine & Machinery



Holdings, Casting,
Battery, Solite



Retail, Fashion, Food, Total living
Travel, Bio, Digital IT



Marine & Fire Insurance,
Asset management



Real estate development
construction, Intelligent B/D



Lifts, logistics automation Management
consulting, Renewable energy



Mobility, Construction
Education & Culture



Construction, Glass,
Silicon, Leisure

Hunex Surfaces



HV-303 GRAND CANYON

Colors HV-303 Grand Canyon

Applications Information Desk, Reception Desk, Pillar / Sculpture

Hunex Surfaces has excellent stability and water repellent properties, which are not affected by the surrounding environment, and it maintains its original shape for a long time. It is an ideal material for counters in commercial buildings or for kitchen counters in residential buildings.

Hunex Key Features



Durability

Hunex Surfaces is a non-porous material that has the equal properties inside and outside. Any damages or scratches can be easily recovered as new. The excellent waterproof properties prevent water penetration and make it hygienic all the time.



Easy Handling

Hunex Surfaces is easy to handle in the installation and maintenance process. It only requires the minimum resources to process the material. It can be easily recovered from the damage with a simple process.



Design Diversity

Hunex Surfaces has a wide range in colors and patterns that can meet the broad tastes in the market. We have a wide range of knowledge and technology in developing market-leading designs from 25 years of experience in interior stone business.



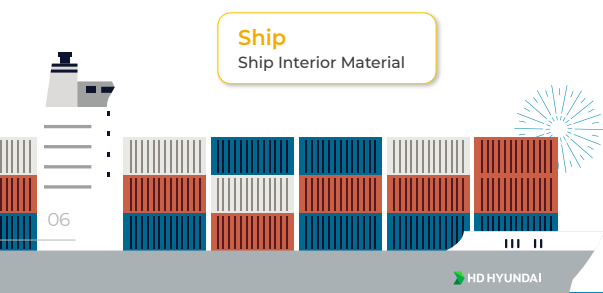
Infinite Design

Hunex Surfaces features a seamless design when multiple sheets are attached. Joint line is invisible and hygienic that designer can apply infinite designs for use in hospitals and laboratories.

Hunex Application

The **Hunex Surfaces** has excellent stability and waterproofness, making it suitable for use in a variety of spaces.

It is a material that can be used freely without distinction between residential and commercial spaces.



Hunex Surfaces



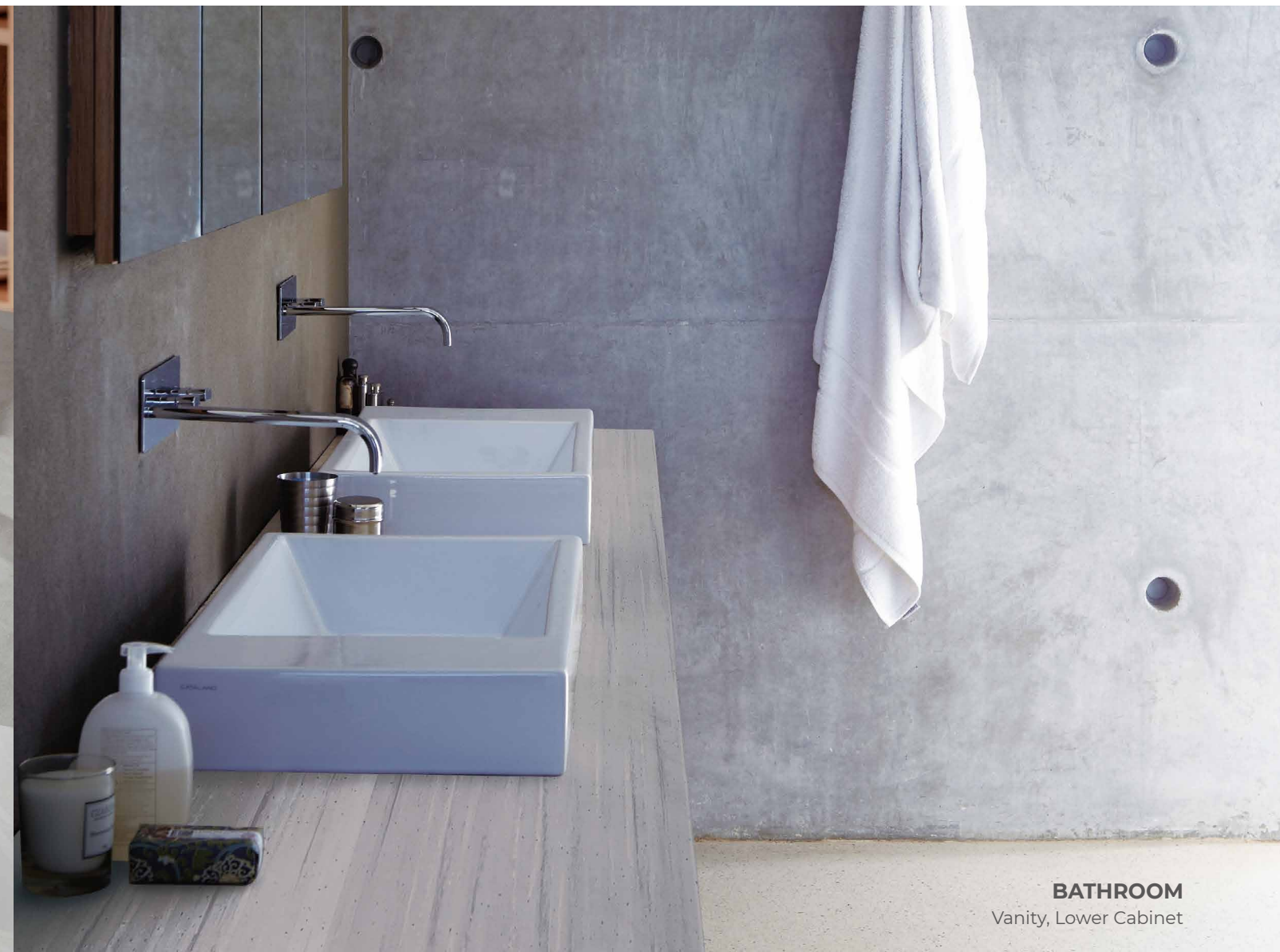
KITCHEN
Kitchen wall, Countertop



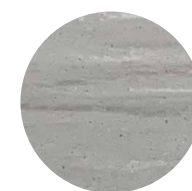
HV-301 BREEZE

Colors HV-301 Breeze

Applications Kitchen Wall, Countertop



BATHROOM
Vanity, Lower Cabinet



HV-304 SILVER FLOW

Colors HV-304 Silver Flow

Applications Bathroom Vanity, Bathroom Lower Cabinet



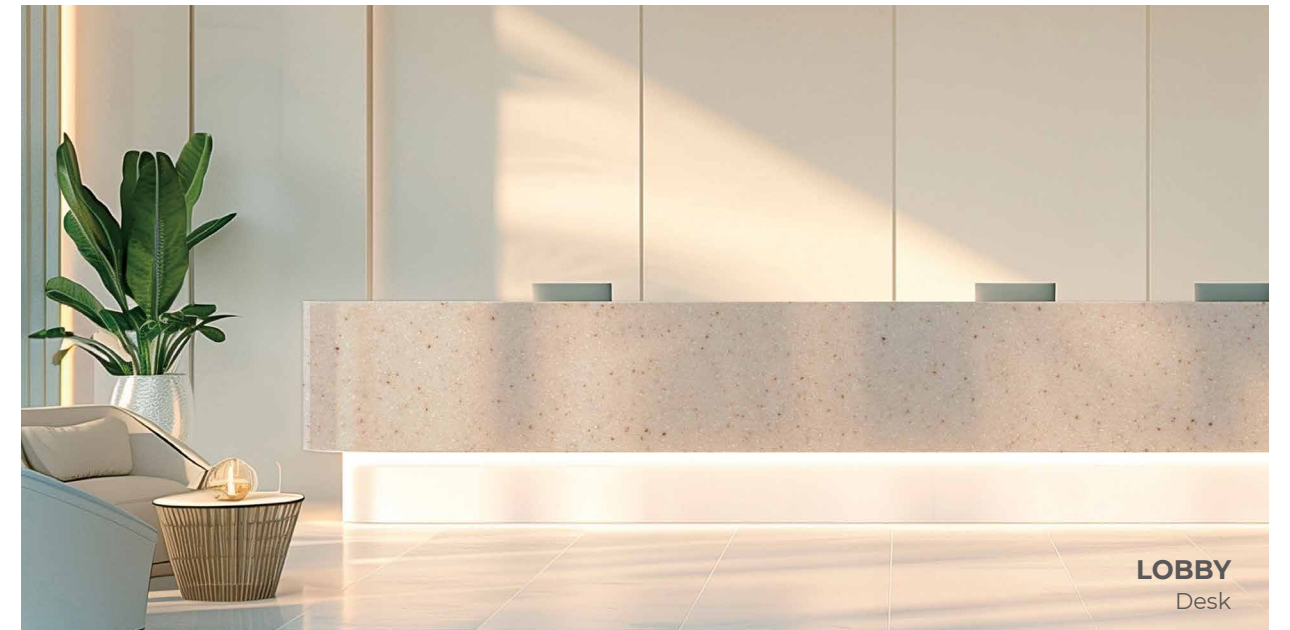
STORE
Bench, Sculpture



HV-302 ICEBERG

Colors HV-302 Iceberg

Applications Bench, Sculpture



LOBBY
Desk



HG-107 RED SAND

Colors HG-107 Red Sand

Applications Information Desk, Lobby Reception Desk



LOBBY
Wall



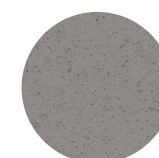
HS-001 H-WHITE

Colors HS-001 H-White

Applications Wall



OFFICE
Table, Information Desk



HG-109 KOALA

Colors HG-109 Koala

Applications Office Table, Information Desk

Hunex Color Index

Vein



HV-301 **BREEZE**



HV-302 **ICEBERG**



HV-303 **GRAND CANYON**



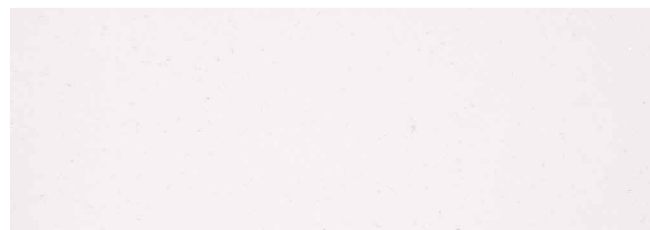
HV-304 **SILVER FLOW**

SOLID



HS-001 **H-WHITE**

PEARL



HP-201 **SHIMMER WHITE**

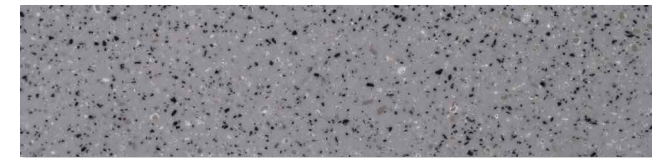
GRANITE



HG-101 **ELEFANTE**



HG-102 **BLIZZARD**



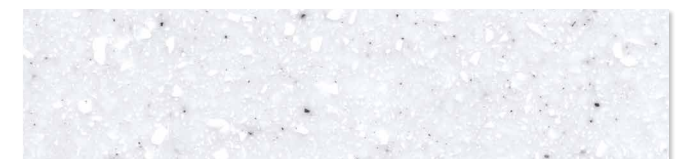
HG-103 **METEOR**



HG-104 **MOON**



HG-105 **SNOWFALL**



HG-106 **STORM CLOUDS**



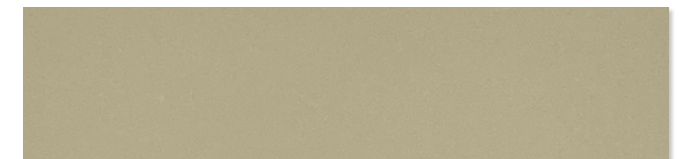
HG-107 **RED SAND**



HG-108 **WOLF**



HG-109 **KOALA**



HG-110 **ALMOND IVORY**



HG-111 **SAHARA**



HG-112 **NATURAL CEMENT**

Hunex

Technical Data Sheet

About Hunex

Hunex has various colors and patterns, and is made of the same materials both inside and outside. It can compensate the disadvantages of laminate and coating. It can also be processed in limitless forms in which is not possible with laminate and natural stone.

Hunex Product Size

Thickness	Length * Width
12mm	3680 * 760mm
6mm	2490 * 760 mm

* A customized size is available depending on the order quantity.
* Please contact the regional sales team for its availability and pricing.

Technical Specification

Property	Test Standard	Unit	Thickness 12mm
Density	ASTM C97/C97M-18	kg/m3	1722
Flexural Modulus	ASTM D790-17 Process A	Mpa	10200
Flexural Strength	ASTM D790-17 Process A	Mpa	63.9
Tensile Modulus	ASTM D638-22	Mpa	9050
Tensile Strength	ASTM D638-22	Mpa	45
Barcol Hardness	ASTM D2583-13a	-	64
Absorption by Weight	ASTM C97/C97M-18	%	0.1
Izod Notched Impact Strength	ASTM D256-10(2018) Method C	J/m	5
Heated Pan Test	ANSI Z124.6	-	No Effect
Cigarette Test	ANSI Z124.6	-	No Effect
Surface Burning Characteristics	ASTM E84-17	-	Class A
Antimicrobial Activity Test	ASTM G 21-15	-	0 Grade
High Temperature Resistance	NEMA LD-3	-	No Effect
Stain Resistance Test	ANSIZ 124	-	Pass
Abrasion Resistance	ASTM C241/C241M-1531	-	Pass
Light Aging Test - Xenon Lamp Exposure	ANSI Z124.6 & ASTM D2565-99&ASTM D2244-16	-	Pass

* Hyundai L&C shall not be liable for any damages, including claims relating to the specification, design, fabrication, installation, or any other indirectdamages.
* Hyundai L&C reserves the right to make changes to this information.
* Though the information contained herein is believed to be reliable, Hyundai L&C cannot and does not warrant that this information is to be understood as implying any legal liability offitness or suitability for any purpose.

Global Network

- Central Office
- Plant
- Showroom

PLANT

L-TECH, SEJONG PLANT

37, Buganggeumho-ro, Bugang-myeon, Sejong-si, Korea (30074)
Tel. +82 44 279 8000

C-TECH, SEJONG PLANT

79-20, Geumhoangol-gil, Bugang-myeon, Sejong-si, Korea (30077)
Tel. +82 44 279 8000

HYUNDAI L&C CANADA

2860 Innovation Drive, London, Ontario, Canada (N6M 0C5)
Tel. +1 519 951 3154
E-mail. info@hanstone.ca
Tel. www.hanstone.ca

SHOWROOM

GALLERY Q

714, Nonhyeon-ro, Gangnam-gu, Seoul, Korea (06051)
Tel. +82 2 508 4485

VAUGHAN SHOWROOM

150 Caldari Road, Vaughan, Ontario (L4K 4L1)
Tel. +1 905 660 3770

WEST COAST

16031 Carmenita Rd, Cerritos, CA, USA (90703)
Tel. +1 562 6230600

SOUTHEAST

335 Riverside Parkway, Austell, GA, USA (30168)
Tel. +1 678 398 2513

MIDWEST

2833 Charter St, Columbus, OH, USA (43228)
Tel. +1 614 9690100

MID-ATLANTIC

135 Hartman Rd, North Wales, PA, USA (19454)
Tel. +1 215 646 2546

NEW ENGLAND

292 Lonczak Rd, Chicopee, MA, USA (01022)
Tel. +1 413 240 4400